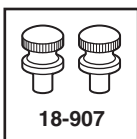


Valve Covers Dress-Up Your Engine



Cast Aluminum

Black Powder Coated

- Two great looks, your choice of cast aluminum or black powder finish.
- Quiets your engine by reducing tappet noise.
- Valve Covers dissipate engine heat efficiently.
- Includes the valve cover cap.
- When installing valve covers you should replace the valve cover gasket for a correct seal. Sold separately.
- You won't want to put these on with grungy old nut caps. Buy new nuts.

PART	DESCRIPTION AND APPLICATION		REQD	LIST	SELL
Aluminum Valve Cover					
17-701	ALUM VALVE COVER	"A" SPRITE MIDGET	58-74 (1)	99.94	79.95
17-703	ALUM VALVE COVER	"B" MIDGET	75-79 (1)	99.94	79.95

Black Powder Coated Valve Cover

17-722	BLACK VALVE COVER	"A" SPRITE MIDGET	58-74 (1)	87.44	69.95
17-723	BLACK VALVE COVER	"B" MIDGET	75-79 (1)	87.44	69.95

Valve Cover Caps

17-697	CAP-VALVE CVR-DOMED	"C" SPRITE MIDGET	58-74 (1)	12.44	9.95
17-696	CAP-VALVE CVR-FLAT	"D" SPRITE MIDGET	58-79 (1)	37.44	29.95

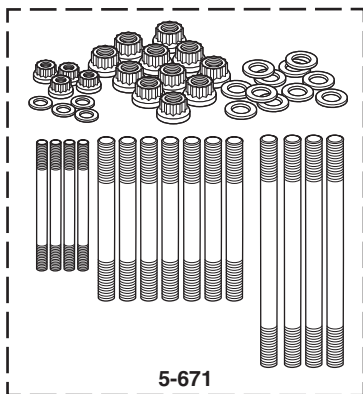
Valve Cover Gaskets and Nut Caps

1-494	GASKET-VALVE COVER	SPRITE MIDGET	58-74 (1)	6.19	4.95
1-475	GASKET-VALVE COVER	MIDGET	75-79 (1)	4.94	3.95

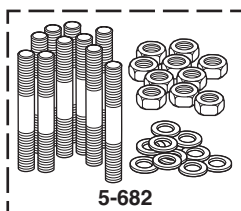
18-907	CHROME THUMB NUT SET "E"	SPRITE MIDGET	58-74 (1)	18.69	14.95
18-900	NUT CAP & WASHER SET	SPRITE MIDGET	58-74 (1)	16.19	12.95
18-908	BRASS VALVE COVER NUT	W/MG LOGO MIDGET	61-74 (2)	23.69	18.95

Note: "A" There is no provision for the crankcase breather, it needs to be rerouted to your air cleaner.
 "B" Valve Cover comes with breather tube. Has 5/16" holes. 1977-79 models with tube nuts will need to drill and enlarge hole to 3/8".
 "C" Fits Aluminum Valve Cover #17-701, #17-703, #17-723.
 "D" Fits Aluminum Valve Cover #17-722.
 "E" Oversize chrome thumb nuts require no tools for quick and easy installation and removal.

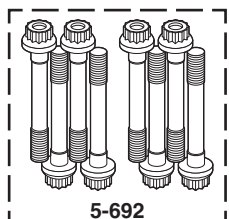
Engine Stud and Bolt Kits



5-671



5-682



5-692

Professional quality engine hardware from Automotive Racing Products. ARP uses premium grade 8740 chrome moly steel heat treated to a nominal tensile strength of 190,000 psi. These kits are far superior to original fasteners in terms of durability and service life, fully capable of handling the extra stress of high performance engines.

PART	DESCRIPTION AND APPLICATION	REQD	LIST	SELL
5-671	HEAD STUD KIT	948 1098 1275 (1)	249.94	199.95
5-673	HEAD STUD KIT	1500 (1)	124.94	99.95
5-682	MAIN STUD KIT	1275 (1)	112.44	89.95
5-692	ROD BOLT KIT	1275 (1)	174.94	139.95
5-694	ROD BOLT KIT	1500 (1)	124.94	99.95

**Conforming to Industry Standards,
 Racing Products are Not Guaranteed
 and No Liability is Assumed.**

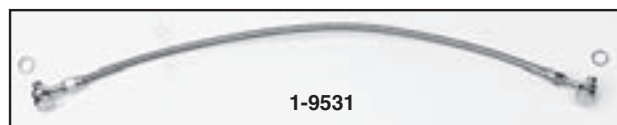
Copper Head Gasket ... Give Your Car Added Security



A Copper Head Gasket decreases the chance of leakage which may occur in high-performance racing engines. Cars driven at high rpms for long periods of time will develop high engine temperatures that break down normal head gaskets. A Copper Head Gasket has a high tolerance to heat which enables it to keep your car performing at its very best, even at high temperatures. Reduce the chance and expense of another blown head gasket with this Copper Head Gasket. The cost is worth the added security, call or go online and order yours today.

PART	DESCRIPTION AND APPLICATION	REQD	LIST	SELL
1-7351	COMPETITION HEAD GASKET	948 1098 (1)	16.19	12.95
1-7352	COMPETITION HEAD GASKET	1275 (1)	23.69	18.95

Rocker Oil Feed Kit



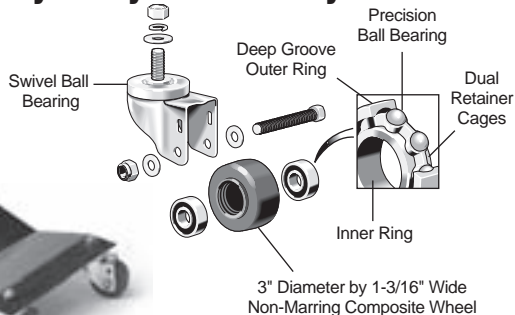
1-9531

This Rocker Oil Feed Kit is designed to increase the supply of oil to the rocker shaft, eliminating some engine problem areas.

This bolt-on kit comes complete for your convenience, saving you time and money. Call or go online and order yours today!

PART	DESCRIPTION AND APPLICATION	REQD	LIST	SELL
1-9531	ROCKER OIL FEED KIT	1500 75-79 (1)	62.44	49.95

Extra Heavy-Duty Auto Dolly Set Makes Moving Your Car Easy



15-698

Sold as Set of 4

- XHD Auto Dolly Set makes it easy for one person to move a car, truck or SUV forward, backward or sideways into a tight spot.
- 7,000 lbs. rating means you can handle any car, SUV or truck up thru 3/4 ton pickups.
- Dolly platform painted black.
- 1/4" thick mild steel x 12" x 16" formed plate.
- Ball bearing caster wheels are 3" in diameter by 1-3/16" wide.
- Each non-marring composite caster has a swivel ball bearing and two deep groove ball bearings.
- Each dolly has one caster equipped with one locking safety brake.
- XHD Auto Dollies are only for use on level smooth surfaces.

*After the sell price means Oversize Part Charge. Your order will incur a charge of \$20.00 for each oversized part.

PART	DESCRIPTION AND APPLICATION	LIST	SELL
15-698	XHD AUTO DOLLY SET OF 4	7,000 LB CAPACITY	212.44 169.95 *



Don't Just Rebuild it ... Improve it ! 3 Complete Megadyne Cam Kits - 3 Levels of Power

All Kent Camshafts are high lift - high torque - wide power band cams with phenomenal mid-range and top end power. They are precision reground to the highest standard using the most current technological equipment. They will operate at maximum efficiency and satisfaction, only when installed properly in the correct application.

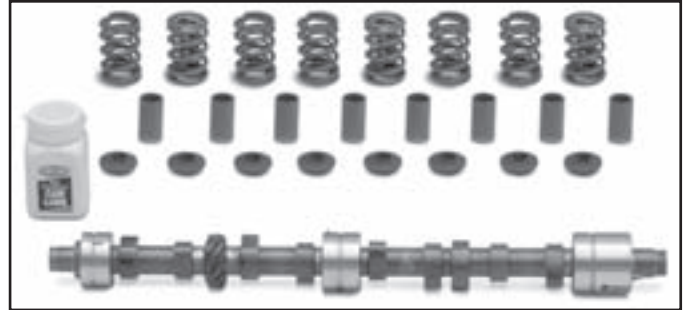
VICTORIA BRITISH LTD.,
The Exclusive Mid-American Distributor

Made in England

PART	DESCRIPTION AND APPLICATION	REQD	LIST	SELL
Sprite				
17-150	STREET CAM KIT 1000-6000 "A" SPRITE	58-66 (1)	537.44	429.95
17-151	STREET CAM KIT 1000-6000 "B" SPRITE	67-69 (1)	624.94	499.95
17-152	ROAD CAM KIT 1000-6500 "B" SPRITE	67-69 (1)	624.94	499.95
17-153	HIGH CAM KIT 1500-7000 "B" SPRITE	67-69 (1)	624.94	499.95
Midget				
17-150	STREET CAM KIT 1000-6000 "A" MIDGET	61-66 (1)	537.44	429.95
17-151	STREET CAM KIT 1000-6000 "B" MIDGET	67-74 (1)	624.94	499.95
17-152	ROAD CAM KIT 1000-6500 "B" MIDGET	67-74 (1)	624.94	499.95
17-153	HIGH CAM KIT 1500-7000 "B" MIDGET	67-74 (1)	624.94	499.95
17-158	ROAD CAM KIT 2000-6500 MIDGET	75-79 (1)	599.94	479.95

Note: "A" Pin Drive 3/8" lobe. "B" Star Drive 1/2" lobe.

Not legal for sale or use on pollution controlled vehicles.



Street Speed Grind: To keep ahead of the pack and still have a smooth idle at a light.

Road Speed Grind: To put you way out in front and still have a smooth idle at a light.

High Speed Grind: As close to *Full Race* as you can get and still have driveability and idle at the lights. The use of a High Speed Grind Camshaft may cause lumpy idle.

Kent Camshaft Kit Includes:

- Kent Performance Camshaft
- Kent Performance Lifters
- Cam Lubricant
- Valve Springs

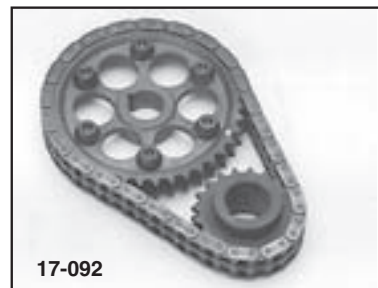
Contents of the kits were specially selected so all components are compatible and will fit without additional machining being necessary. **Assembly Tip:** You must use cam lube on camshaft and cam lifters before assembly to prevent scuffing during initial start-up.

PART #	POWER BAND	CAM LIFT INT/EXH	VALVE LIFT INT/EXH	DURATION INT/EXH	TIMING FIGURES	INLET TIMING @ FULL LIFT	VLV/CLRNC INT/EXH
17-150 Street	1000-6000	.263" 6.67mm	.320" 8.12mm	254°	21/53 53/21	106°	.016" 0.40mm
17-151 Street	1000-6000	.263" 6.67mm	.320" 8.12mm	254°	21/53 53/21	106°	.016" 0.40mm
17-152 Road	1000-6500	.263" .270" 6.67mm 6.85mm	.320" .330" 8.12mm 8.37mm	260° 270°	24/56 61/29	106°	.016" 0.40mm
17-153 High	1500-7000	.293" .315" 7.43mm 7.99mm	.360" .388" 9.14mm 9.84mm	270° 280°	29/61 66/34	106°	.016" 0.40mm
17-158 Road	2000-6500	.261" .382" 6.62mm 9.69mm	.378" 9.59mm	295°	39/76 76/39	108°	.014 .018" 0.36mm 0.46mm

Kent Adjustable Sprocket Kit for Razor Sharp Timing

Adjustable Cam Sprocket allows for precision indexing of the cam while the gears are still on the car. Infinite adjustability allow for any changes or modifications to your engine. Dual sprockets and chain give you reliable timing and a longer service life. Kit includes adjustable dual cam gear, dual crank gear, dual chain, wrench and timing disc with instructions.

PART	DESCRIPTION AND APPLICATION	REQD	LIST	SELL
17-092	KENT ADJUSTABLE SPROCKET SPRITE MIDGET	58-74 (1)	312.44	249.95
1-487	TIMING COVER GASKET SPRITE MIDGET	58-74 (1)	3.69	2.95
5-834	TIMING COVER OIL SEAL SPRITE MIDGET	58-74 (1)	4.94	3.95



Fuel Pressure Regulator Eliminates High-End Power Fade

This chrome-plated, adjustable Fuel Pressure Regulator allows you to fine tune your fuel flow which helps to eliminate high-end power fade. Proper metering of fuel while maintaining a constant desired fuel pressure ensures better low and high rpm performance.

Fully adjustable from 1/2 to 5-1/2 psi in 1/2 psi increments. Includes 5/16" and 3/8" threaded nipple ends, flexible fuel line, clamps and instructions. For use on carbureted systems only.



For 5/16" Applications

For 3/8" Applications

PART	DESCRIPTION AND APPLICATION	LIST	SELL
3-495	FUEL PRESSURE REGULATOR ALL CARBS	43.69	34.95